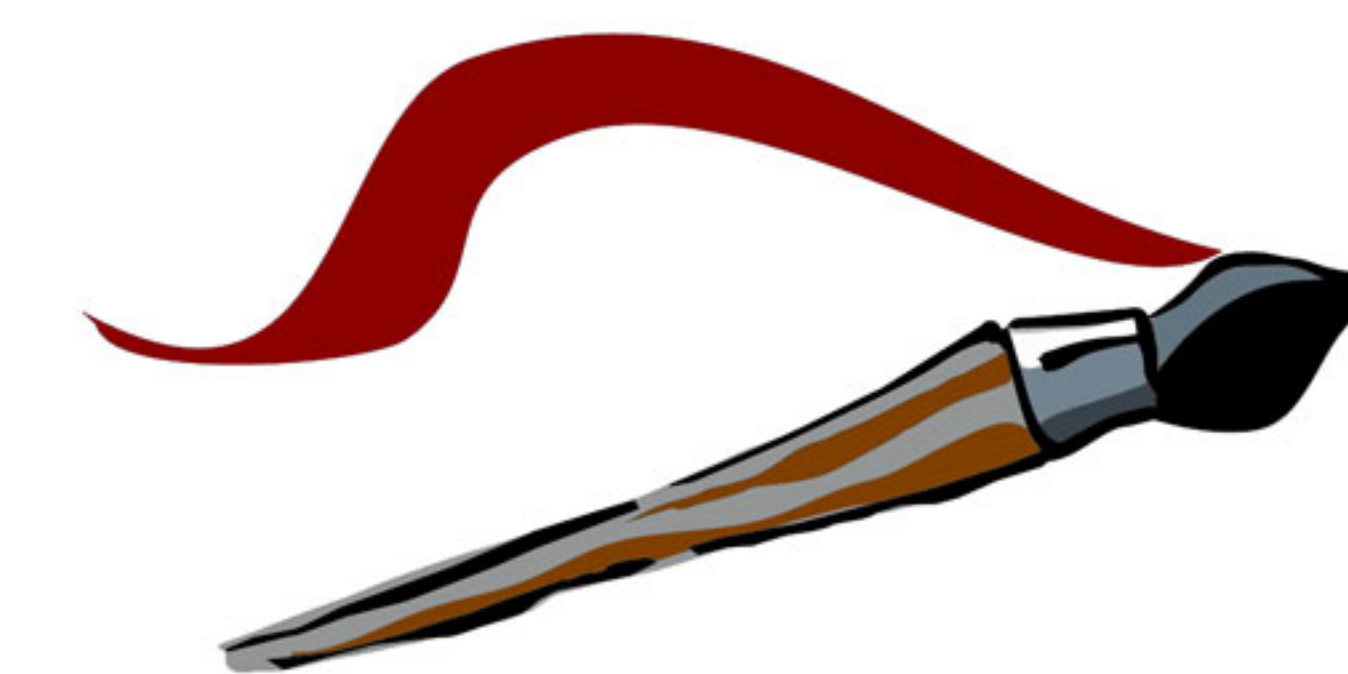


# Beacon Hill Art Walk



**Always the  
first Sunday  
in June!**

**Noon - 6 pm  
Rain or Shine  
Free!**

**BeaconHillArtWalk.org**

S: Starting Points

M: Music Locations

P: Porta Potties

\$: ATMs

1. Putnam Ave

2. West Cedar Street

3. Advent School lot

4. Lindall Ct.

5. Primus Ave

6. Phillips St. Park .

7. Rollins Place

8. Goodwin Place

9. Sentry Hill Place

10 Bellingham Place

Up Next: Boston Arts Festival September 10 & 11

South End Open Studios September 17 & 18